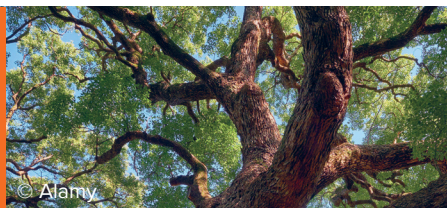


# TREE OF PRAYER

Will you help create a Tree of Prayer in Nigeria?

This is a Camphor tree, the national tree of Nigeria – and at Open Doors, it's become a symbol of the persecuted church in Sub-Saharan Africa.



© Alamy

The camphor tree in Nigeria	The church in Sub-Saharan Africa
Large evergreen tree which can reach heights of 30 metres	There are more Christians in Africa than anywhere else in the world
It grows in scrubland on roadsides when other trees have wilted and died	The church is resilient in the face of violent persecution
Its glossy leaves release a smell of camphor when crushed	Under extreme pressure, Christians continue to follow Jesus with faith and hope
Its roots go deep and it offers shade to many	The church goes deep and wide, sharing God's love across many nations

You can help create a Tree of Prayer, based on the camphor tree, at Open Doors' trauma healing centre in Nigeria.

## YOU NEED TO:

- » Add your prayer for persecuted believers to the camphor tree leaf on the opposite page.
- » Cut out the leaf and mail it back to Open Doors Canada.
- » Your leaf will be delivered to Open Doors' trauma healing centre in Nigeria, where our partners will hang it, with other leaves from around the world, on a Tree of Prayer.
- » Your prayer will strengthen the faith of our brothers and sisters, and they will know they are not alone.

Add your prayer here and mail it to  
 Open Doors Canada  
 8-19 Brownridge Rd.,  
 Halton Hills, ON L7G 0C6

It will be sent to Open Doors' trauma healing centre in Nigeria, creating a Tree of Prayer to strengthen persecuted believers.

